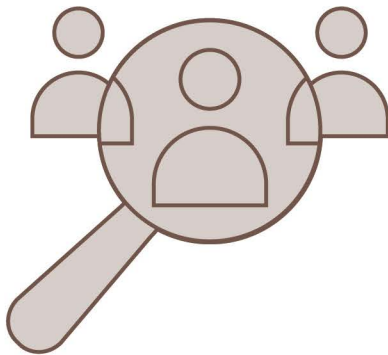


Employment

The South East accounts for 9% of employment in Ireland (227,500 persons)

Top 5 Sectors	Total employed Q3 2023	Q3 2022 - Q3 2023 change
Health	30,700	+12% ▲
Wholesale & retail	29,400	+16% ▲
Industry	28,100	-7% ▼
Construction	18,200	+16% ▲
Agriculture	16,500	+42% ▲



* Excludes not stated

[] Numbers in square brackets are small and should be interpreted with caution

Occupational* groups – South East	Q3 2023	Q3 2022-Q3 2023 change
Professionals	41,300	-10% ▼
Skilled trades	30,200	0%
Associate professionals	25,000	+9% ▲
Elementary	24,600	-4% ▼
Operatives	21,000	+19% ▲
Administrative	19,900	+16% ▲
Managers	19,800	+25% ▲
Caring services	19,100	+3% ▲
Sales	16,200	+16% ▲
Farmers	10,100	[+44%] ▲

Companies with recent job announcements in the South East region

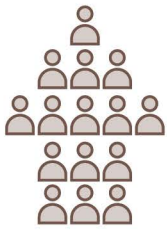
Company	No. of Jobs
Azets	120
BD	85
Unum	50
Cheveron College	50
Adtech	35
HCS	15



Key Labour Market Trends

(Q3 2022 – Q3 2023)

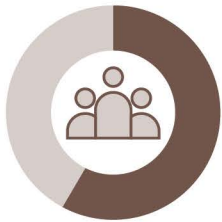
Employment



↑ 5%

Employment in the South East region increased by **10,600 persons (or 5%)**.

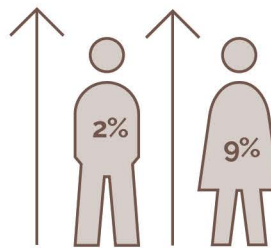
Participation rate



64%

The labour force participation rate in the South East region grew by 2.2 percentage points in the year to Q3 2023, but remained below the overall rate for the State (65.8%).

Gender



Employment growth was considerably greater for females (a 9% increase, or 8,700 persons) than for males (a 2% increase, or 2,000 persons).

Occupation



- While the number of skilled trades workers remained almost unchanged, only two occupational groups experienced declines in numbers employed: professionals (4,600 fewer people) and elementary occupations (900 fewer people).
- Employment grew by more than 3,000 persons each for managers, operatives, and farmers.

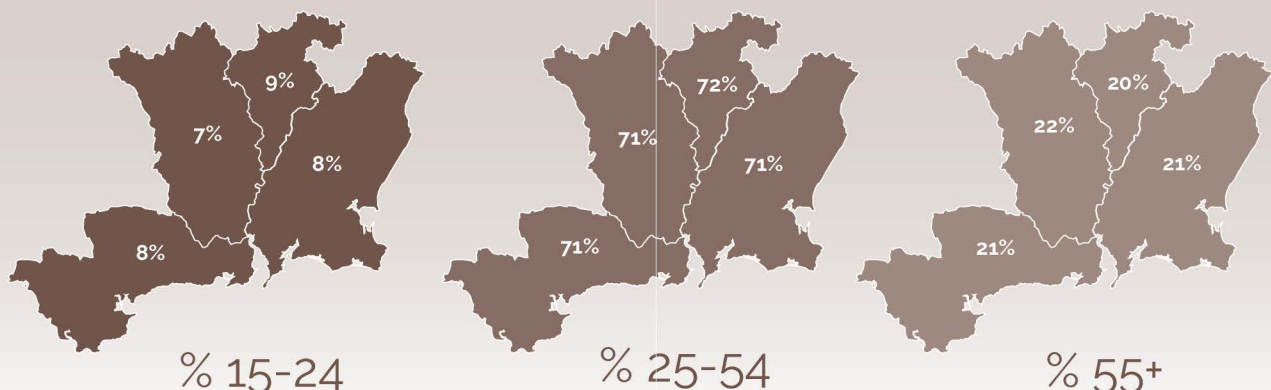


Sector

- Agriculture had the strongest absolute growth, with 4,900 additional workers (+42%), followed by wholesale/retail (4,100 additional workers, or 16%).
- In contrast, the largest declines were in the education sector (-34%), accommodation/food (-14%), and industry (-7%).

Persons at work by age and county, Census 2022

Nationally, 8% of the workforce was aged 15-24 years, 73% were aged between 25 and 54 years, and 19% were aged 55 years or more. The share of older workers was above the national average for each county in this region, while the share of those in the prime working age cohort (25-54 years) was smaller than the national average for each county.



Employment by sector and county, Census 2022

Co Wexford made up more than a third of employment in the South East region, but made up 40% and 41% of regional employment in construction and transport, respectively.

	Carlow	Kilkenny	Waterford	Wexford	South East
Agriculture	14%	28%	22%	36%	100%
Industry	15%	20%	35%	31%	100%
Construction	14%	24%	21%	40%	100%
Wholesale & retail	14%	23%	25%	38%	100%
Transport	14%	22%	23%	41%	100%
Accommodation & food	12%	23%	27%	39%	100%
ICT	14%	20%	34%	33%	100%
Finance etc	11%	29%	21%	39%	100%
Professional services	14%	25%	28%	33%	100%
Admin support	14%	20%	32%	34%	100%
Public admin & defence	14%	25%	25%	37%	100%
Education	13%	24%	29%	34%	100%
Health	11%	27%	30%	32%	100%
Other sectors	12%	22%	26%	40%	100%
All sectors*	13%	24%	28%	35%	100%

* Excludes not stated

Other indicators from Census 2022

	Carlow	Kilkenny	Waterford	Wexford	South East	State
Population aged 15+	49,656	83,066	102,900	131,437	367,059	4,136,852
% Population who are retired	15%	17%	18%	18%	17%	16%
% Population who are students	11%	10%	11%	9%	10%	11%
% Population with 3rd level	35%	38%	37%	32%	35%	42%
% Workforce in high-tech manufacturing	3%	4%	9%	3%	5%	5%
% Working from home	24%	28%	25%	26%	26%	32%

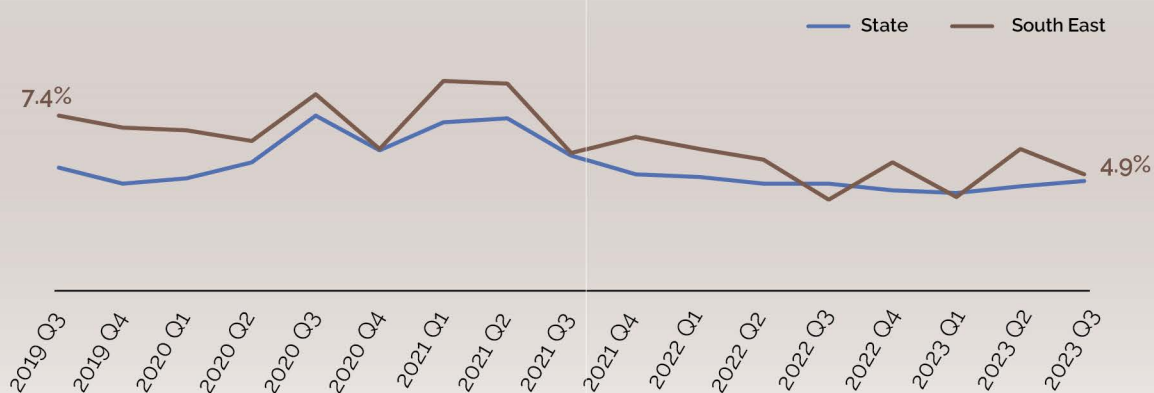
Top 10 detailed occupations in the South East

- Sales and retail assistants
- Farmers
- Nurses and midwives
- Other administrative occupations n.e.c.
- Primary and nursery teachers
- Secondary education teaching professionals
- Care workers and home carers
- Nursing auxiliaries and assistants
- Managers and directors in retail and wholesale
- Cleaners and domestics



Unemployment

Unemployment rate % Q3 2019 – Q3 2023



Numbers unemployed
Q3 2023



11,500

Change from
Q3 2022-Q3 2023



Increase of
3,100
persons

UE Rate Q3 2023

4.9%

Which is above the
national average
(4.6%)

Change from
Q3 2022-Q3 2023
UE Rate



Increase of
1.1
percentage points

Overall comments

- In Q3 2023, at 64%, the labour force participation rate in the South East region was the third lowest (after the Mid-West and Border (CSO LFS).
 - The South East was one of only three regions in which the construction sector figured amongst the top five sectors for employment (the others were the Mid-East and the Midland regions) (CSO LFS).
 - With 4,600 fewer persons, the South East was one of only three regions (the others were the Midland and South West) to experience a decline in the number of professionals in the year to Q3 2023) (CSO LFS).
 - After the Border region, the South East had the second largest increase in the number of operatives engaged (+3,300 persons) (CSO LFS).
 - The South East had, after the South West, the second largest absolute increase in unemployment in the year to Q3 2023, with 3,100 additional unemployed persons (CSO LFS).
-