

Employment

The Border accounts for 8% of employment in Ireland (210,200 persons)

Top 5 Sectors	Total employed Q3 2023	Q3 2022-Q3 2023 change
Industry	35,600	+22% ▲
Health	31,600	+7% ▲
Wholesale/retail	20,200	-20% ▼
Education	19,500	+10% ▲
Agriculture	18,600	+23% ▲



Occupational* groups Border	Q3 2023	Q3 2022-Q3 2023 change
Professionals	42,300	+38% ▲
Skilled trades (exc farmers)	28,600	+15% ▲
Admin	23,900	+20% ▲
Operatives	21,100	+20% ▲
Elementary	20,300	-13% ▼
Associate professionals	20,100	-7% ▼
Caring services	17,000	-8% ▼
Managers	14,400	-22% ▼
Farmers	12,500	+26% ▲
Sales	8,500	-39% ▼

* Excludes not stated

Companies with recent job announcements in the Border region

Company	No. of Jobs
SL Controls	100
Tantek 4D	20
Tarasis enterprises	300



Employment by sector and county, Census 2022

More than a third (38%) of employment in the Border region was in Co. Donegal, followed by one fifth in Co. Cavan; Co. Donegal, however, accounted for 51% of all regional ICT employment and 48% of all regional accommodation/food employment.

	Leitrim	Sligo	Cavan	Donegal	Monaghan	Border
Agriculture	8%	13%	24%	32%	23%	100%
Industry	8%	17%	25%	29%	21%	100%
Construction	7%	12%	23%	38%	19%	100%
Wholesale & retail	8%	16%	20%	38%	18%	100%
Transport	7%	14%	21%	37%	21%	100%
Accommodation & food	8%	17%	17%	48%	10%	100%
ICT	8%	19%	14%	51%	8%	100%
Finance etc	8%	14%	19%	45%	13%	100%
Professional services	9%	16%	22%	37%	16%	100%
Admin support	9%	17%	21%	39%	15%	100%
Public admin & defence	12%	22%	15%	39%	11%	100%
Education	9%	17%	17%	42%	15%	100%
Health	8%	21%	18%	39%	14%	100%
Other sectors	8%	17%	17%	42%	16%	100%
All sectors*	8%	17%	20%	38%	16%	100%

* Excludes not stated

Other indicators from Census 2022

	Leitrim	Sligo	Cavan	Donegal	Monaghan	Border	State
Population aged 15+	28,038	56,825	63,952	132,992	50,958	332,765	4,136,852
% Population who are students	10%	11%	10%	10%	10%	10%	11%
% Population who are retired	20%	20%	16%	20%	16%	18%	16%
% Population with 3rd level	37%	41%	32%	34%	32%	35%	42%
% Workforce in high-tech manufacturing	5%	7%	2%	2%	1%	3%	5%
% Working from home	28%	27%	22%	23%	21%	23%	32%

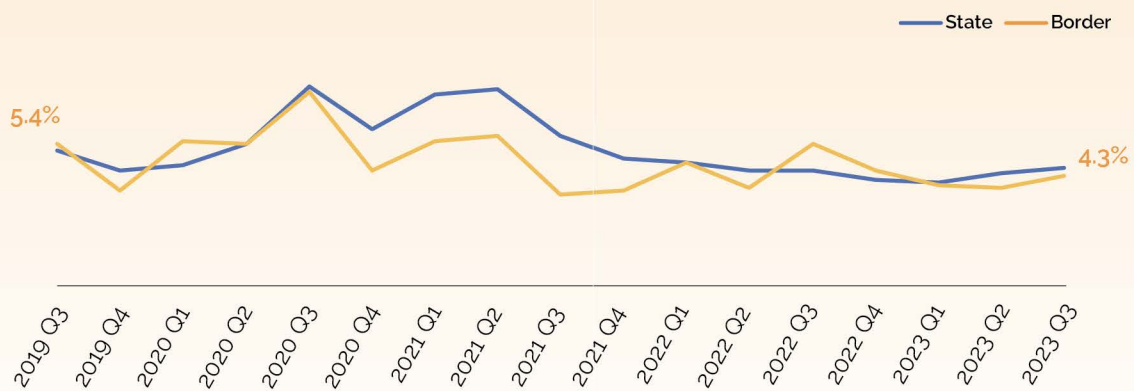
Top 10 detailed occupations in the Border

- Farmers
- Sales and retail assistants
- Nurses and midwives
- Other administrative occupations n.e.c.
- Primary and nursery teachers
- Nursing auxiliaries and assistants
- Secondary education teaching professionals
- Care workers and home carers
- National government administrative occupations
- Elementary construction occupations



Unemployment

Unemployment rate % Q3 2019 – Q3 2023



Numbers unemployed
Q3 2023



9,400

Change from
Q3 2022 - Q3 2023



Decrease of
2,000
persons

UE Rate Q3 2023

4.3%

Which is below
the national
average (4.6%)

Change from
Q3 2022 - Q3 2023
UE Rate



Decrease of
1.1
percentage points

Overall comments

- In Q3 2023, at 63%, the labour force participation rate in the Border was the second lowest in the country after the Mid-West region. (CSO LFS).
 - The Border region made up 17% of agricultural employment nationally; only the South West had a higher share (CSO LFS).
 - Between Q3 2022 and Q3 2023, the Border region was one of two regions (the other being the South West) where the increase in the number of males employed was greater than the number of females (CSO LFS).
 - Over the same period, the Border had the largest increase in industry employment of all regions (+6,300 workers) (CSO LFS).
 - In terms of numbers, the Border region had the second largest increase (after Dublin) in the number of professionals employed (+11,600 people) in the year to Q3 2023, but it had by far the largest decline in the number of sales workers, with 5,400 fewer workers (CSO LFS).
 - The Border region was one of only two regions (along with the West region) to see a decline in unemployment numbers between Q3 2022 and Q3 2023 (CSO LFS).
 - Together with Co. Longford (in the Midland region), Co. Monaghan had the lowest share of persons working from home, at 21%, compared to 32% nationally (Census 2022).
-