

This is FET

Learners with Disabilities 2023



SOLAS
learning works



Co-funded by
the European Union



Riailas na hÉireann
Government of Ireland

**Further
Education
& Training**

A Report by the
National FET Statistics, Data and Insights Unit in SOLAS
November 2024

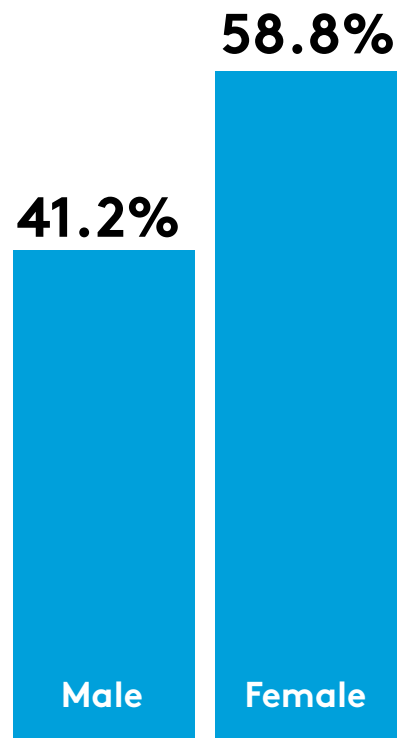
Authors

Amelia Dulee-Kinsolving
Selen Guerin

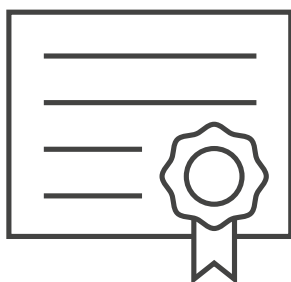
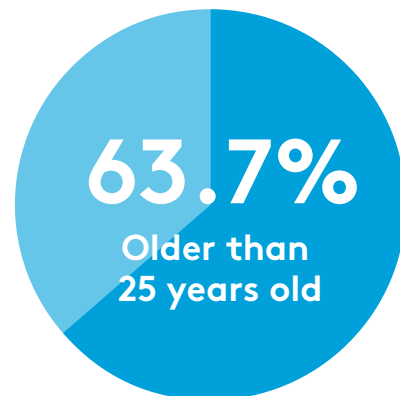
All data is sourced from the Programme and Learner Support Systems (PLSS) database. PLSS collects and processes the personal data of the FET learners who are enrolled in SOLAS funded programmes. This report excludes apprenticeship provision.

The National FET Statistics, Data and Insights Unit would like to acknowledge the assistance of the ETB staff involved in submitting data to SOLAS.

Enrolments



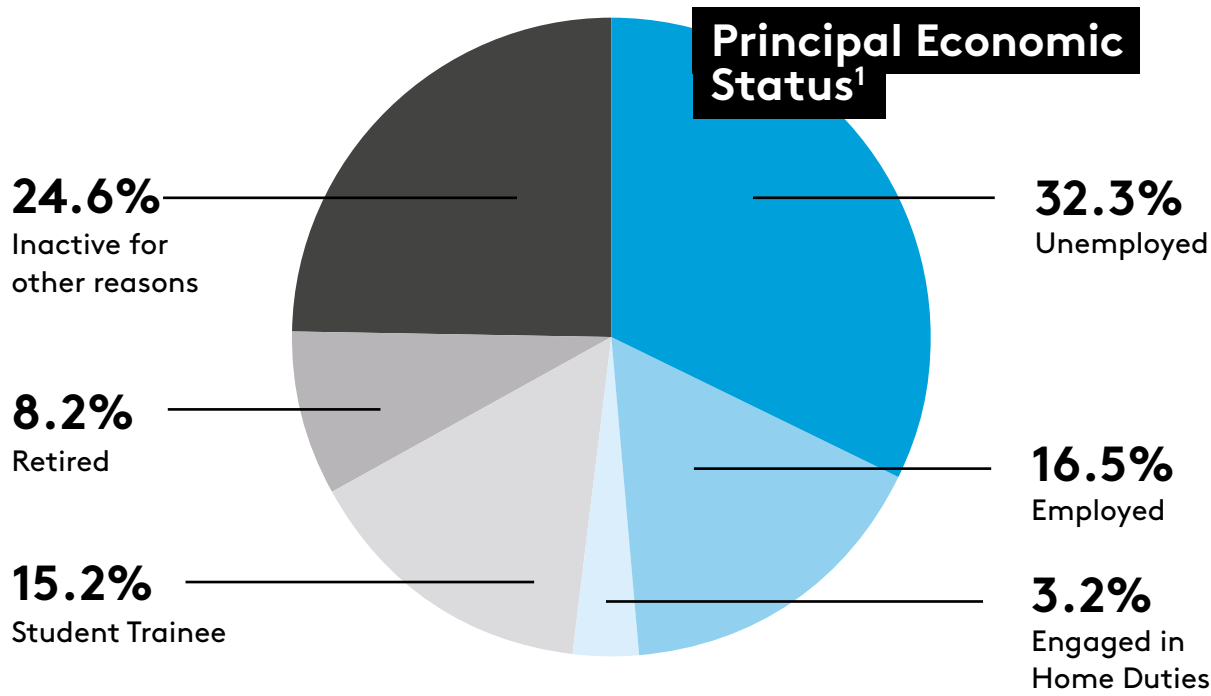
91.9%
Full and partial completions



72.5%
Certification rate

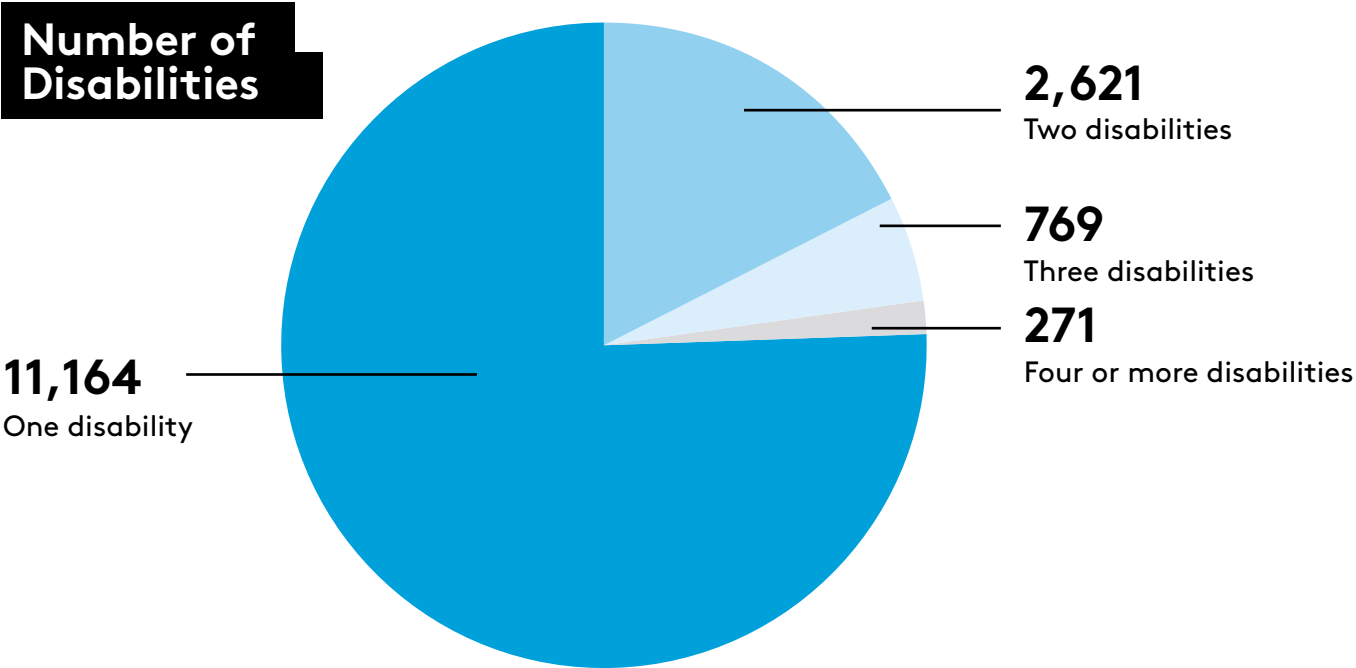
In 2023, there were 14,825 learners enrolled who reported having at least one type of disability in the further education and training programmes. This figure constitutes 6.8% of all learners enrolled in the same year. Of the learner enrolments that reported a disability, 41.2% were men and 58.8% were women. The majority (63.7%) of these learners were older than 25 years of age.

There were also 91.9% of learners that reported a disability who partially or fully completed a course in 2023. The certification rate for those learners who reported a disability and completed certified courses was 72.5% in 2023, up from 61.3% in 2022.

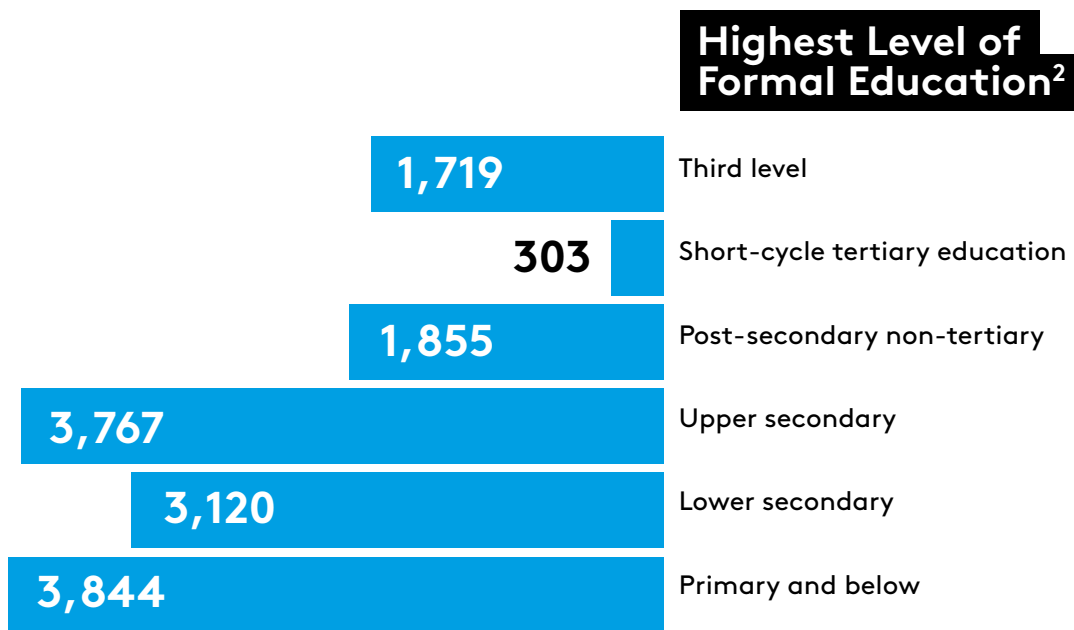


The majority of learners that reported a disability were either unemployed or economically inactive.

The chart below indicates that 11,164 learners reported one type of disability, 2,621 learners reported two, and 1,040 reported three or more.



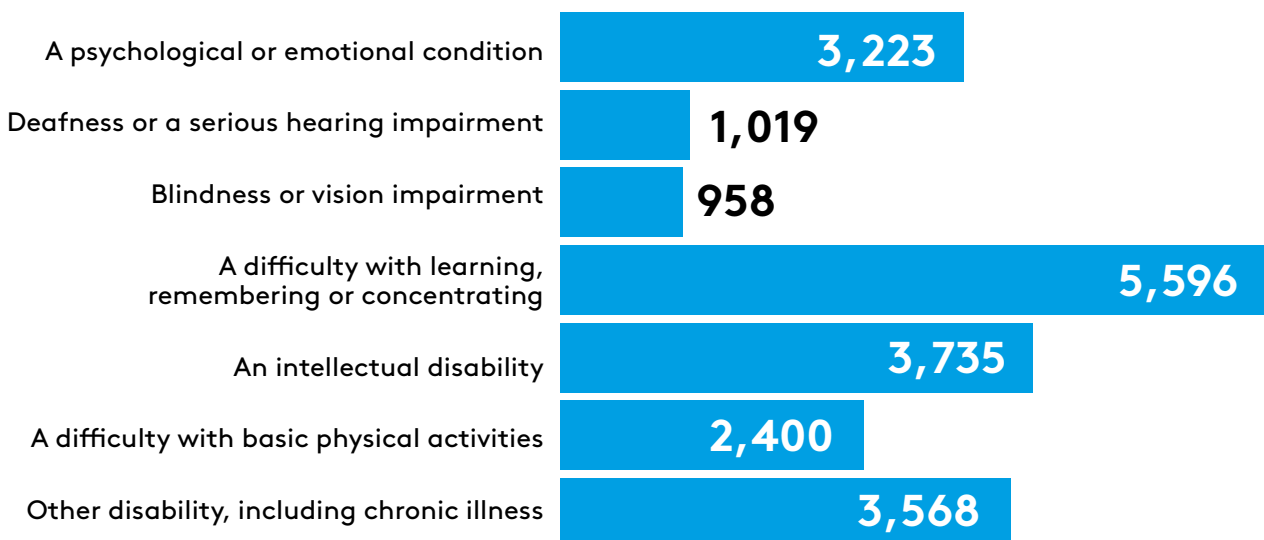
¹ It should be noted that this includes only those cases where previous principal economic status was captured.



Approximately 47.7% percent of the learners had lower secondary or a lower level education attained prior to joining further education and training.

The chart below indicates that 5,596 (37.7%) of learners reported difficulty with learning, remembering or concentrating, 3,568 (24.1%) another type of disability, including chronic illness, and 3,735 (25.2%) an intellectual disability.

Total Number of Learners by Type of Disability³



² It should be noted that this figure is an estimate and includes only those cases where previous levels of education were captured.

³ Learners here are unique within each type of disability but not necessarily across disabilities.

ETB⁴

ETB	Learners
Cavan and Monaghan ETB	585
City of Dublin ETB	1,989
Cork ETB	1,016
Donegal ETB	397
Dublin and Dun Laoghaire ETB	2,157
Galway and Roscommon ETB	502
Kerry ETB	430
Kildare and Wicklow ETB	801
Kilkenny and Carlow ETB	661
Laois and Offaly ETB	851
Limerick and Clare ETB	481
Longford and Westmeath ETB	699
Louth and Meath ETB	1,382
Mayo, Sligo and Leitrim ETB	939
Tipperary ETB	709
VSCSS	17
Waterford and Wexford ETB	1,347

Of the 14,825 learners that reported a disability, 2,157 (14.4%) were enrolled in the Dublin and Dun Laoghaire ETB. This figure was followed by 1,989 who were enrolled in the City of Dublin ETB, representing 13.3% of learners that reported at least one disability.

⁴ Learners here are unique within ETBs but not necessarily across ETBs.

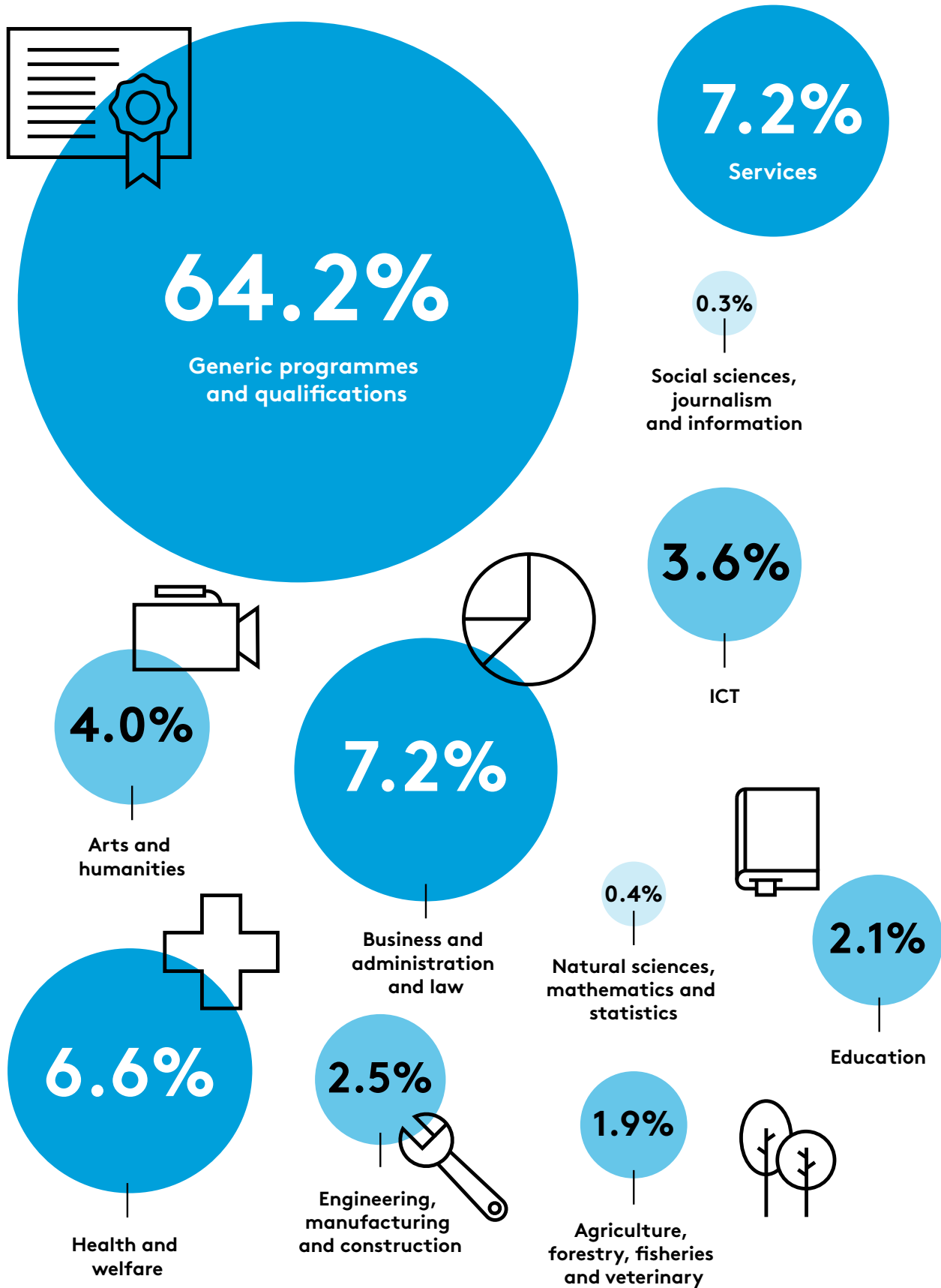
Programme Category⁵

Programme Category	Learners
Adult Literacy Tuition	3,545
Blended Training	32
Bridging Foundation Training	98
BTEI Groups	1,640
Community Education	3,390
Community Training Centres	389
ESOL	1,022
Evening Training	369
FET Cooperation Hours	468
ITABE	88
Justice Workshop	23
Local Training Initiatives	230
Other Funding	85
PLC	2,096
Refugee Resettlement	8
Skills to Advance	307
Skills for Work	53
Specialist Training Providers	927
Specific Skills Training	463
Traineeship Employed	38
Traineeship Training	220
Voluntary Literacy Tuition	25
VTOS Core	327
Youthreach	865

Among FET programmes, enrolments were primarily concentrated among Adult Literacy, Community Education, and PLC programmes.

⁵ Learners here are unique within programmes but not necessarily across programmes.

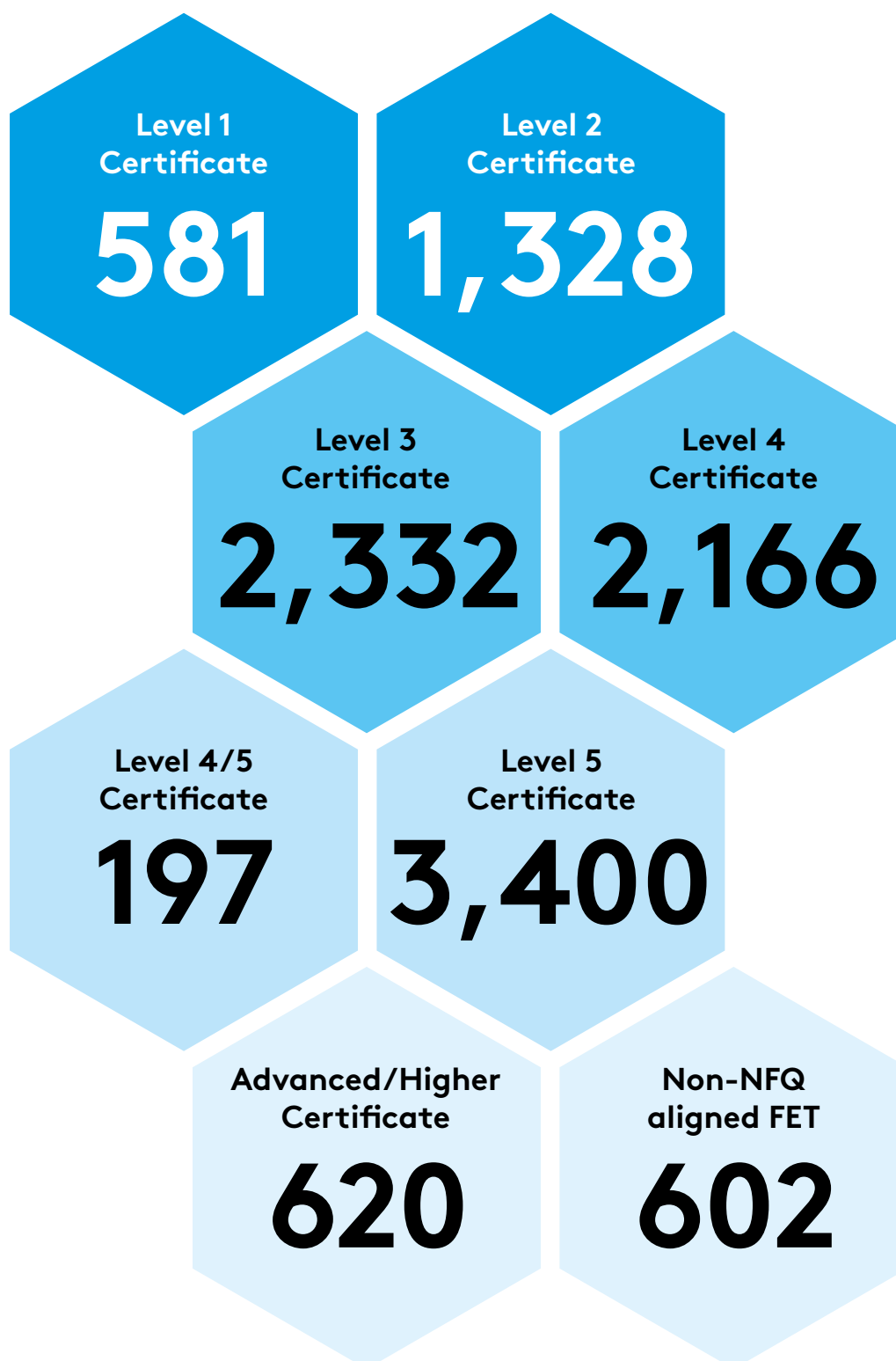
Field of Study (Broad ISCED)⁶



⁶ Learners here are unique within ISCED field of study but not necessarily across fields of study.

Field of Study (Broad ISCED)	Examples of courses
Generic programmes and qualifications	Employability Skills
	ESOL English Language
	Health and Wellbeing
	Arts and Crafts
Business and administration and law	Start your own Business
	Office Administration
Health and welfare	Nursing Studies
	Applied Social Studies
Services	Beauty Therapy
	Sports, Recreation and Exercise
Arts and humanities	Art, Craft and Design
	Film and TV Production
Education	Early Childhood Care and Education
	Special Needs Assisting
ICT	Computer Systems and Networks
	Computer Basics
Engineering, manufacturing and construction	Welding
	Engineering Technology
Agriculture, forestry, fisheries and veterinary	Horticulture
	Animal Care
Natural sciences, mathematics and statistics	Applied Science/ Laboratory Techniques
	Pre-University Science
Social sciences, journalism and information	Journalism for the Digital Age
	Cultural and Heritage Studies

Irish National Framework of Qualifications (NFQ) or Equivalent⁷



⁷ Learners here are unique within course levels but not necessarily across. Excludes learners enrolled in courses that do not lead to an award through a recognised awarding body and learners with a disability in 2023 who were enrolled on courses that led to Honours Bachelor Degree/Higher Diploma have been excluded as their numbers were less than 5.

Definition of Terms

Certification Rate

The proportion of full and partial learner completions who achieved certification to all learners who completed a certified course in 2023.

Completions

Completions include the total number of learners who fully or partially completed their course during 2023. Completions exclude those learners who may have left their course early (e.g. early leavers).

Enrolments

Enrolments are defined as learners who are on course or have completed a course during 2023.

Field of Study

This is defined and categorised by the International Standard Classification of Education (ISCED). In this report, only broad (2-digit) fields of study are used for categorising Further Education and Training courses.

Full Completions

Learners who have completed 90 per cent or more of the course and its requirements in 2023.

Irish National Framework of Qualifications (NFQ)

This is a framework through which all learning achievements may be measured and related to each other in a coherent way. The many different types and sizes of qualifications included in the NFQ are organised based on their level of knowledge, skill and competence. In some cases, where awards have not been placed on the Irish NFQ, equivalent levels are assigned based on the document 'Qualifications can cross boundaries' and the level assigned to the award on the relevant country's framework (e.g. Cf. Ofqual, Scottish Credit and Qualifications Framework, etc.).

Learner

A unique individual who has progressed onto a course in the application process. The total number of learners is the sum of all unique individuals in Further Education and Training in 2023.

Non-NFQ Aligned courses

This includes completions with certification not aligned with the NFQ.

On Course

This refers to those learners who were still on course at a point in time.

Partial Completions

Learners who have completed more than 25 per cent but less than 90 per cent of a course and its requirements in 2023.

Post-secondary non-tertiary

This refers to Post Leaving Certificate NFQ Level 4 or 5, Advanced Certificate NFQ Level 6, other non-NFQ aligned FET, Certificate NFQ Level 4, or Certificate NFQ Level 5.

Short-cycle tertiary education

This refers to third level non-degree courses and includes higher certificate NFQ level 6 courses and diploma NFQ level 7 courses. These courses are usually of one year in duration and are often vocational in nature.

Third Level

This refers to Ordinary Bachelor degree, Honours Bachelor degree, Professional, Post-Graduate, Doctorate or Higher degree courses.

For further information, please contact:

**National FET Statistics, Data and Insights Unit, SOLAS
Block 1, Castleforbes House
Castleforbes Road, Dublin 1
nfsdi@solas.ie**

SOLAS.ie