

## Employment

The Mid-West accounts for 9% of employment in Ireland (247,600 persons)

Top 5 Sectors	Total employed Q3 2023	Q3 2022 - Q3 2023 change
Industry	42,300	+2% ▲
Health	37,700	+20% ▲
Wholesale/retail	27,200	-16% ▼
Education	23,800	+31% ▲
Accommodation & food	16,600	+13% ▲



Occupational groups* - Mid-West	Q3 2023	Q3 2022-Q3 2023 change
Professionals	53,600	+26% ▲
Skilled trades (excl. farmers)	29,300	+7% ▲
Associate professionals	28,200	+12% ▲
Elementary	26,300	+8% ▲
Caring services	22,700	+5% ▲
Operatives	21,000	-9% ▼
Admin	19,700	-8% ▼
Managers	18,600	-15% ▼
Sales	17,300	-10% ▼
Farmers	10,100	-6% ▼

\* Excludes not stated

## Companies with recent job announcements in the Mid-West region

Company	No. of Jobs
Analog Devices	600
The Lunch Bag	450
Boston Scientific	400
H&MV	350
SEPAM	100



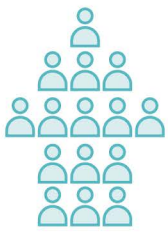
**SEPAM**



# Key Labour Market Trends

(Q3 2022-Q3 2023)

## Employment



↑ +3%

Employment in the Mid-West region increased by **8,100 persons (or 3%)**.

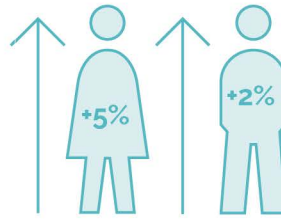
## Participation rate



62.4%

In Q3 2023, at 62.4%, the Mid-West region had the lowest participation rate compared to all other regions and was below the overall rate for the State (at 65.8%). Between Q3 2022 and Q3 2023, the rate increased by 0.5 percentage points.

## Gender



Between Q3 2022 and Q3 2023, the employment increase was greater for females (5%, or 5,700 more persons) than for males (2%, or 2,400 more persons).

## Occupation



- The numbers employed in professional and associate professional occupations grew by 11,000 and 3,000 persons respectively.
- In contrast, the largest falls in employment were for sales and operative occupations (-2,000 persons each) and managers (-3,000 persons).

### Health



+6,200

### Education



+5,700

### Retail



-5,100

### Construction



-1,400

### Agriculture

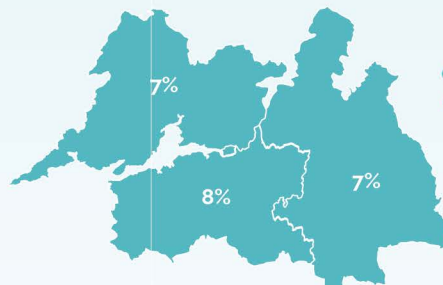


## Sector

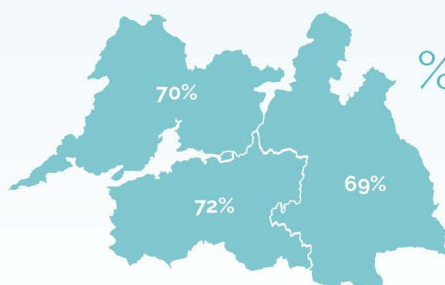
- The health and education sectors had the largest growth with 6,200 and 5,700 additional persons respectively.
- There were declines across several sectors, with the largest falls in wholesale/retail (5,100 fewer people), followed by construction and agriculture (1,400 fewer people each).

## Persons at work by age and county, Census 2022

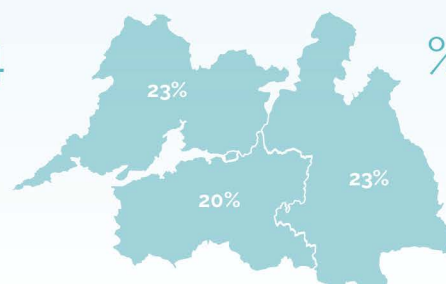
Nationally, 8% of the workforce was aged 15-24 years, 73% were aged between 25 and 54 years, and 19% were aged 55 years or more. The share of older workers was above the national average for each of the three counties in this region.



% 15-24



% 25-54



% 55+

## Employment by sector and county, Census 2022

Co. Limerick accounted for more than two fifths of all employment in the Mid-West region, but more than a half of regional ICT employment. In contrast, while Co. Tipperary made up just over a third of regional employment, it accounted for nearly half of all agricultural employment in the region.

	Clare	Limerick	Tipperary	Mid-West
Agriculture	22%	30%	49%	100%
Industry	27%	39%	33%	100%
Construction	26%	37%	37%	100%
Wholesale & retail	22%	42%	36%	100%
Transport	32%	40%	29%	100%
Accommodation & food	30%	42%	28%	100%
ICT	26%	53%	21%	100%
Finance etc	27%	44%	29%	100%
Professional services	25%	42%	33%	100%
Admin support	27%	44%	28%	100%
Public admin & defence	28%	34%	37%	100%
Education	26%	41%	33%	100%
Health	23%	45%	32%	100%
Other sectors	26%	38%	35%	100%
<b>All sectors*</b>	<b>26%</b>	<b>41%</b>	<b>34%</b>	<b>100%</b>

\* Excludes not stated

## Other indicators from Census 2022

	Clare	Limerick	Tipperary	Mid-West	State
Population aged 15+	102,940	170,062	134,609	407,611	4,136,852
% Population who are retired	18%	17%	18%	17%	16%
% Population who are students	11%	12%	10%	11%	11%
% Population with 3rd level	40%	39%	33%	37%	42%
% Workforce in high-tech manufacturing	8%	7%	6%	7%	5%
% Working from home	29%	27%	24%	27%	32%

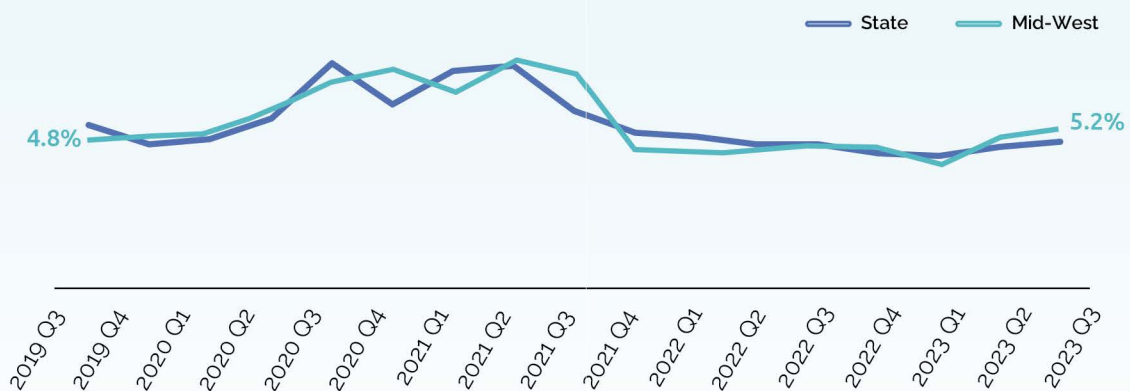
## Top 10 detailed occupations in the Mid-West region

- Farmers
- Sales and retail assistants
- Nurses and midwives
- Other administrative occupations n.e.c.
- Primary and nursery teachers
- Care workers and home carers
- Secondary education teaching professionals
- Nursing auxiliaries and assistants
- National government administrative occupations
- Chartered and certified accountants



## Unemployment

Unemployment rate % Q3 2019 – Q3 2023



Numbers unemployed  
Q3 2023



**13,400**  
persons  
unemployed

Change from  
Q3 2022-Q3 2023



Increase of  
**2,200**  
persons

UE Rate Q3 2023

**5.2%**

Above the national  
average (4.6%) and  
the highest rate  
across all regions

Change from  
Q3 2022-Q3 2023  
UE Rate



Increase of  
**0.7**  
percentage points

---

## Overall comments

- The Mid-West region had the lowest labour force participation rate (at 62.4%) across all regions in Q3 2023 (CSO LFS).
  - The Mid-West region was the only region to see a decline in agriculture employment (-8%, or 1,400 fewer persons), although it was one of three regions where the number of farmers declined (along with the Mid-East and the Midland regions (CSO LFS).
  - At 7%, the share of the workforce engaged in high-tech manufacturing was the third highest across all regions (after the South West, at 8% and the West, at 9%) (Census 2022).
  - At 5.2%, the Mid-West had the highest unemployment rate across all regions in Q3 2023 (CSO LFS).
-